



GLOBAL EAST ASIA TECHNOLOGY CO.,LIMITED

Product name:1200MHz Omni Fiberglass Antenna

Product model: GL1200V8

Electrical Specifications	
Frequency Range- MHz	1200-1400
VSWR	≤ 1.5
Gain- dBi	5.25-8.47
Horizontal beam width	360°
Verticalbeam width	35°
Polarization	Vertical
Input Impedance- Ω	50
Maximum input power- W	50
Lightning protection	DC Ground
Mechanical Specifications	
Input connector type	N male
Dimensions- mm	$\Phi 32 \times 1800$
Antenna weight- kg	0.65
Radome material	Fiberglass
Radome color	Gray
Operating temperature	-40° c~60° c
Rated Wind Velocity- m/s	60
Mounting hardware- mm	$\Phi 35 \sim \Phi 50$

Add: Room826, Floor 8,BLDG 13, University Science Park(East), Zhengzhou City, P.R.Henan, China.
Tel: 86-371-65097986/86-371-60911368 Email:info@global-antenna.com
Web:<https://www.asialeren.com> <https://www.global-antenna.com>

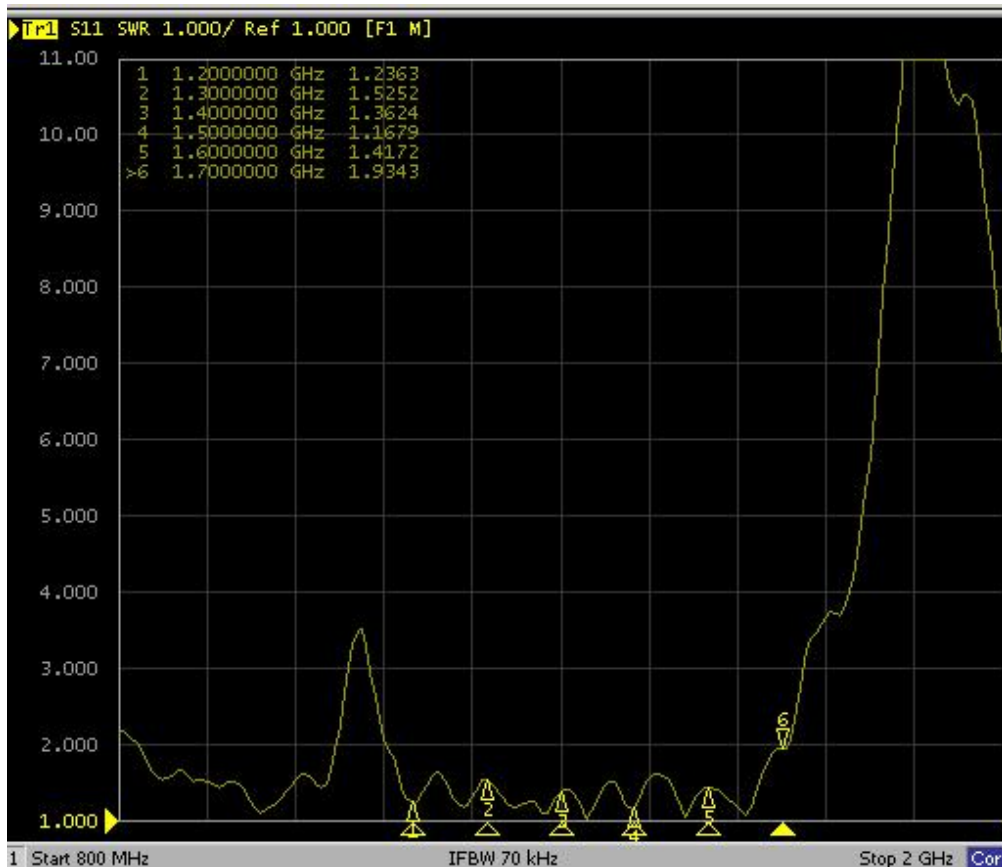


GLOBAL EAST ASIA TECHNOLOGY CO.,LIMITED

product picture



V SWR



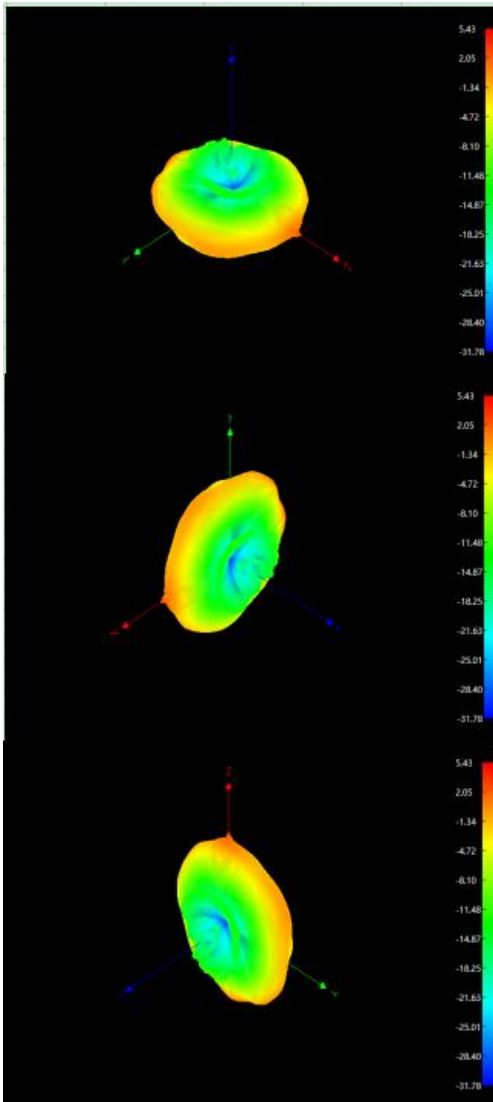
Add: Room826, Floor 8,BLDG 13, University Science Park(East), Zhengzhou City, P.R.Henan, China.
Tel: 86-371-65097986/86-371-60911368 Email:info@global-antenna.com
Web:<https://www.asialeren.com> <https://www.global-antenna.com>



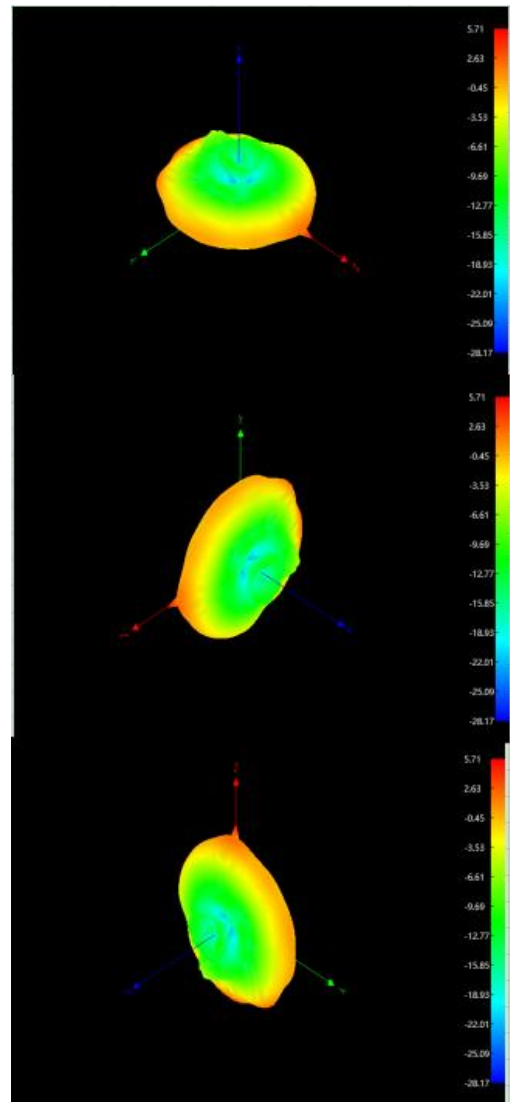
GLOBAL EAST ASIA TECHNOLOGY CO.,LIMITED

Radiation Pattern

1200MHz



1300MHz

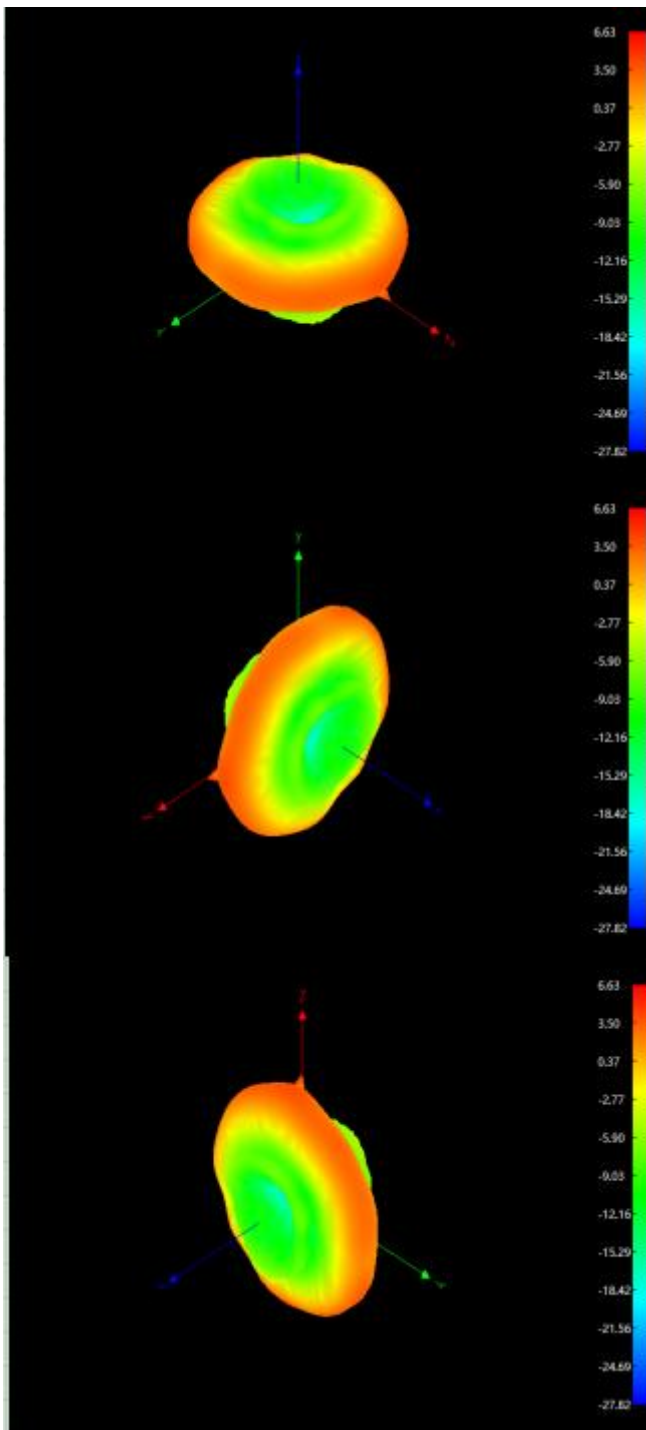


Add: Room826, Floor 8,BLDG 13, University Science Park(East), Zhengzhou City, P.R.Henan, China.
Tel: 86-371-65097986/86-371-60911368 Email:info@global-antenna.com
Web:<https://www.asialeren.com> <https://www.global-antenna.com>



GLOBAL EAST ASIA TECHNOLOGY CO.,LIMITED

1400MHz



Add: Room826, Floor 8,BLDG 13, University Science Park(East), Zhengzhou City, P.R.Henan, China.
Tel: 86-371-65097986/86-371-60911368 Email:info@global-antenna.com
Web:<https://www.asialeren.com> <https://www.global-antenna.com>