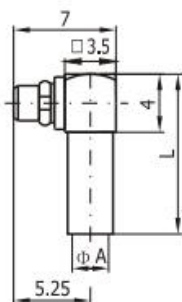




Product type: Right Angle Cable Plugs

Product number: GLMMCX7

Frequency Range(GHz)	0-6	
Characteristic impedance(ohm)	50	
VSWR	≤ 1.25	
Insulation resistance	$\geq 1000M\Omega$	
Dielectric Withstanding voltage	500V(rms)	
Working Voltage	170V(rms)	
Contact resistance	Center conductor	$\leq 10m\Omega$
	Outer conductor	$\leq 5m\Omega$
Connector	MMCX	
Apply cable	047/086	
Length(mm)	$\Phi 7*11*2.5(\Phi A=2.5)$	
Durability	500 Cycles	
MATERIAL AND PLATING		
Body	Brass, gold plated	
Male center contacts	Phosphor, bronze, gold plated	
Female center contacts	Beryllium copper, gold plated	
Insulators	PTFE	
Crimp ferrules	copper alloy, nickel or gold plated	
Temperature range	$-40\sim+90^{\circ}C$	



Add: Room 826, Block B, BLDG 18, University Science Park(East), Zhengzhou City, P.R. Henan, China.
Tel: 86-371-60911368 Email: info@global-antenna.com
Web: <http://www.asialeren.com> <http://www.global-antenna.com>